



GUEST SUPPORTERS INFORMATION PACK

CONTENT

THE STADIO OLIMPICO

HOW TO REACH THE STADIUM

FAN MEETING POINT

COACH DROP OFF AT STADIO OLIMPICO

ONCE THROUGH THE FIRST CHECK POINT

THE STAIRWELL TO THE VISITORS SECTIONS

VIEW FROM THE VISITORS SECTION

SUPPORTERS WITH A DISABILITY

CONCOURSE AREA

POST MATCH

THE CITY

FURTHER INFORMATION



THE STADIO OLIMPICO

AS Roma's home stadium is the Stadio Olimpico. Renovated for the Euro 2020 tournament, it is the largest stadium in the city and famously hosted the 1990 FIFA World Cup final. It has been rated a Category 4 stadium by UEFA, making it a highlight for any football fan to visit.

CAPACITY:

72,698 seats

PITCH SIZE:

105m x 68m

ADDRESS:

Viale dei Gladiatori, 00135 Roma RM, Italy

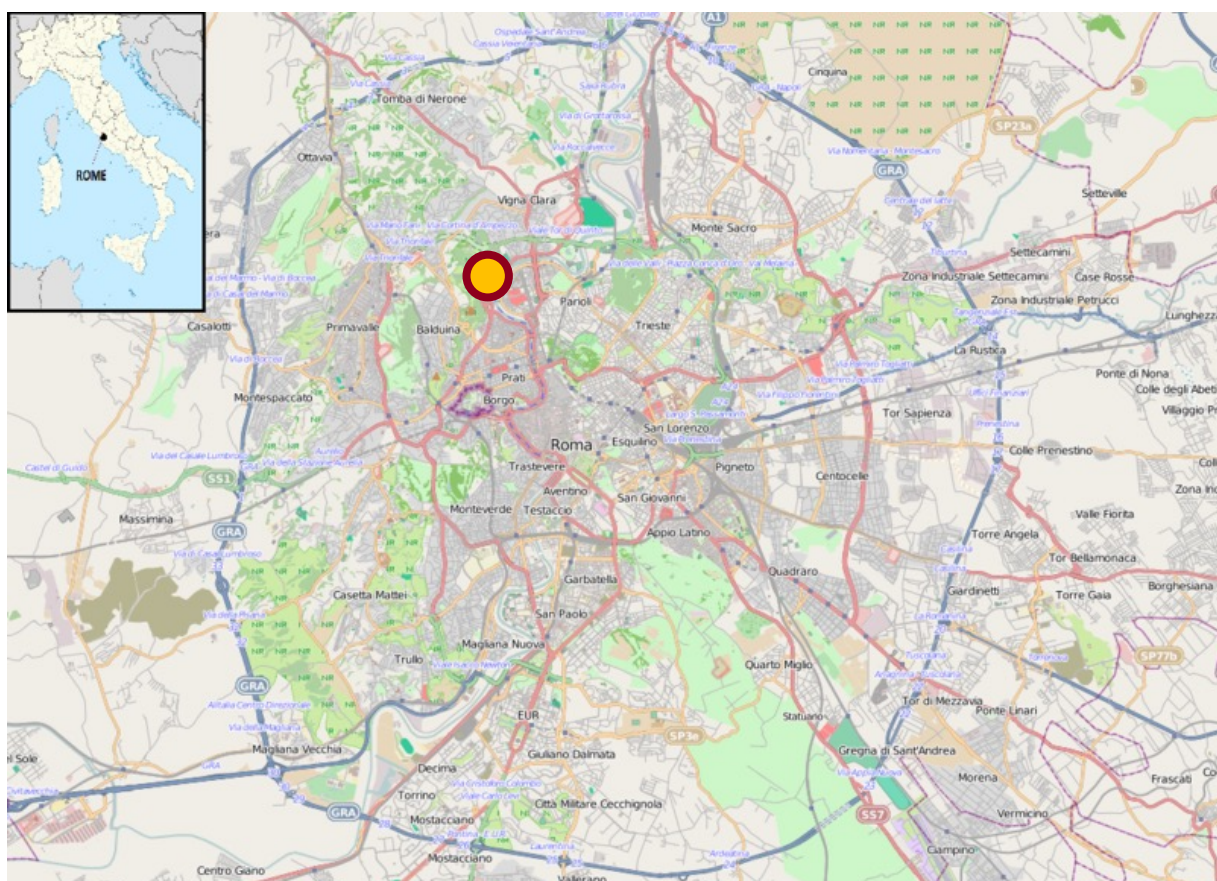




HOW TO REACH THE STADIUM

The Stadio Olimpico is located in the northern part of the city (about seven kilometres from the city centre). There are a couple of ways to get to the stadium. Although you can drive, we would recommend you rather take public transport. As with many major cities, it can get a bit congested, meaning you may spend more time than you would like getting to the game. If you are not too stressed about this, we also suggest you look at using a taxi. It can prove to be cheaper, especially if you are travelling with a group of people.

There are a few popular transport apps that even offer discounted rates for people traveling to the stadium, making this football trip way more affordable than you think. However, if you are determined to drive yourself, you need to take the Roma-Fiumicino motorway from Leonardo Da Vinci airport. From there, you should take GRA Cassia-Flaminia until you get to the N° 5 (Flaminia) exit. Then, all you need to do is follow the signs to the stadium (Foro Italico).





Information on how to get to the Stadio Olimpico by public transport

If you are near to the Metro B line, you can take the metro towards Laurentina. Get off at the Termini station. From there take the underground train towards Battistini and get off at the Ottaviano stop. Following this, take bus No.32 until you get to Piazzale della Farnesina. Once you are there, you are within walking distance of the stadium.

If you are not near the Metro B line, you can use the Metro A to get to the Termini Railway Station. Once there you can switch to the Metro B line and refer to the above.

However, a meeting point for guest supporters is set up near the Stadium.

In case of necessity, you can find more information about public transport at the following links:

<https://www.metropolitanadiroma.it/>

<https://www.atac.roma.it/>

FAN MEETING POINT

The meeting point for guest supporters is the Piazzale delle Canestre; For your own safety, we strongly recommend supporters to use the coaches leaving from the meeting point (Match tickets include the round trip).

We advice supporters to get to the meeting point from 4pm. The first coaches will leave at 5pm for the 30-minute journey to the Stadio Olimpico. Turnstiles will open from 6pm.



COACH DROP OFF POINT AT STADIO OLIMPICO

This is the first check point for guest supporters: tickets and passports will be checked here. Any supporter whose ticket doesn't match the name on the passport will be refused entry.

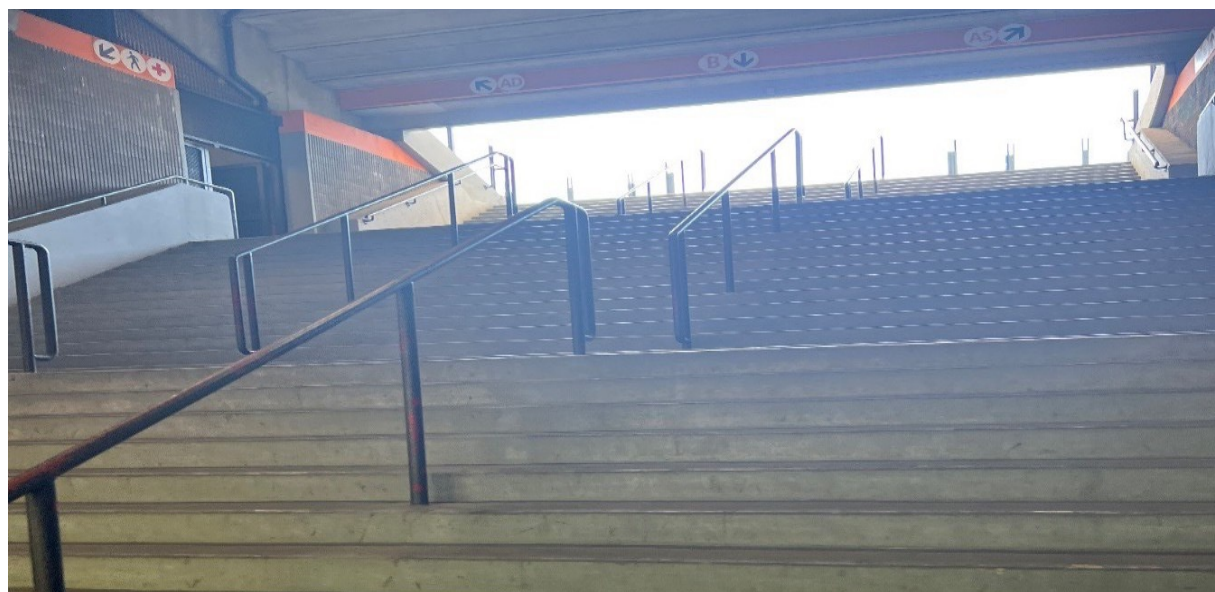


ONCE THROUGH THE FIRST CHECK POINT

Supporters will be directed to the turnstiles.



THE STAIRWELL TO THE VISITORS SEATING





VIEW FROM THE VISITORS SECTION

The incline to the back of the seated area gets steeper further to the back.



SUPPORTERS WITH A DISABILITY

Please note the wheelchair spaces are in the home end but close to the visitors' section. Both the supporter with a disability and personal assistant must attend the game together (there are no seats for personal assistants). The space is located in Block 4BD.



CONCOURSE AREA

Alcohol will be served in the Stadium and can be taken to the seats while the match is in play. There are two service points in the section for supporters.





POST MATCH

Supporters will be taken back to the city center after the match. There is possible hold back of anything up to 90 minutes after the final whistle.

Coaches will be waiting by the visitors' turnstiles to return supporters to the city center area of Piazza dei Cinquecento (Below).





THE CITY

Rome is the capital of Italy and also serves as the capital of the Lazio region. With 2,876,051 residents in 1,285 km² (496.1 sq mi), it is also the country's most populated comune. It is the fourth-most populous city in the European Union by population within city limits.

It is the centre of the Metropolitan City of Rome, which has a population of 4.3 million residents. Rome is located in the central-western portion of the Italian Peninsula, within Lazio (Latium), along the shores of the Tiber. The Vatican City is an independent country inside the city boundaries of Rome, the only existing example of a country within a city: for this reason Rome has been often defined as capital of two states.

Rome's history spans 28 centuries. While Roman mythology dates the founding of Rome at around 753 BC, the site has been inhabited for much longer, making it one of the oldest continuously occupied sites in Europe.

The city successively became the capital of the Roman Kingdom, the Roman Republic and the Roman Empire, and is regarded as the birthplace of Western civilisation and by some as the first ever metropolis. It was first called The Eternal City (Latin: *Urbs Aeterna*; Italian: *La Città Eterna*) by the Roman poet Tibullus in the 1st century BC, and the expression was also taken up by Ovid, Virgil, and Livy. Rome is also called the "Caput Mundi" (Capital of the World).

Rome today is one of the most important tourist destinations of the world, due to the incalculable immensity of its archaeological and art treasures, as well as for the charm of its unique traditions, the beauty of its panoramic views, and the majesty of its magnificent "villas" (parks).

You can find more information at: <https://www.turismoroma.it/en>





FURTHER INFORMATION

Supporters are reminded that any form of discrimination or anti-social behavior (whether physical, verbal or other) is not tolerated.

Supporters engaging in such behavior may have this fixture tickets (and future ones) cancelled and may be subject to additional sanctions (including bans).

You can find more information at: <https://www.asroma.com/en/tickets/stadium-rules>

In case of an emergency, you can contact the numbers below:

- Carabinieri: 112
- Police: 113
- Firefighters: 115
- European Emergency Number (NUE): 112

